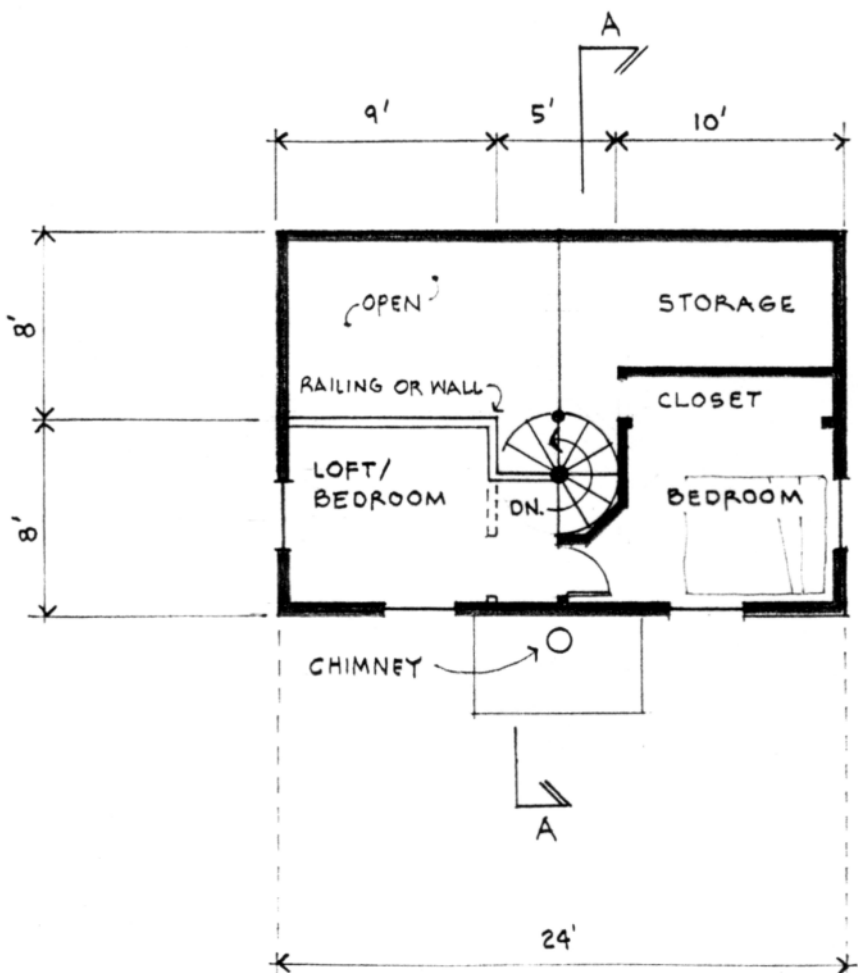
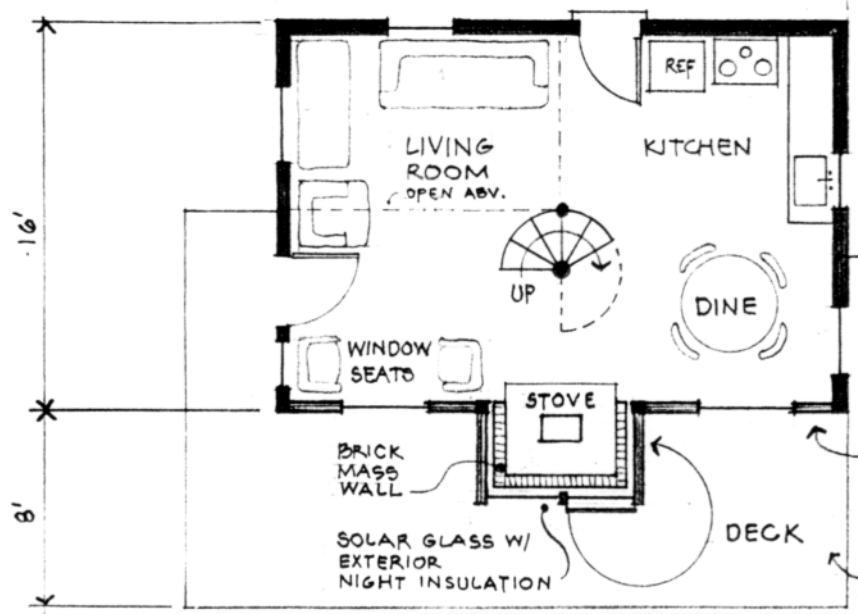


# ECO-COTTAGE · STARTER HOUSE

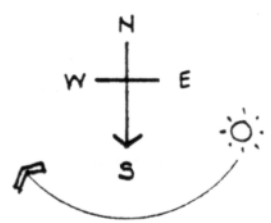
- LIVING AREA - 600 SF
- MATERIALS COST ~ \$5000
- WASTE SYSTEM - SEPERATE COMPOST PAIVY & DRY WELL
- WATER SYSTEM - RAIN-WATER COLLECTION FROM ROOF.
- POWER SYSTEMS - WOOD AND SOLAR HEAT, PROPANE COOK AND REFR., KEROSENE LIGHT.



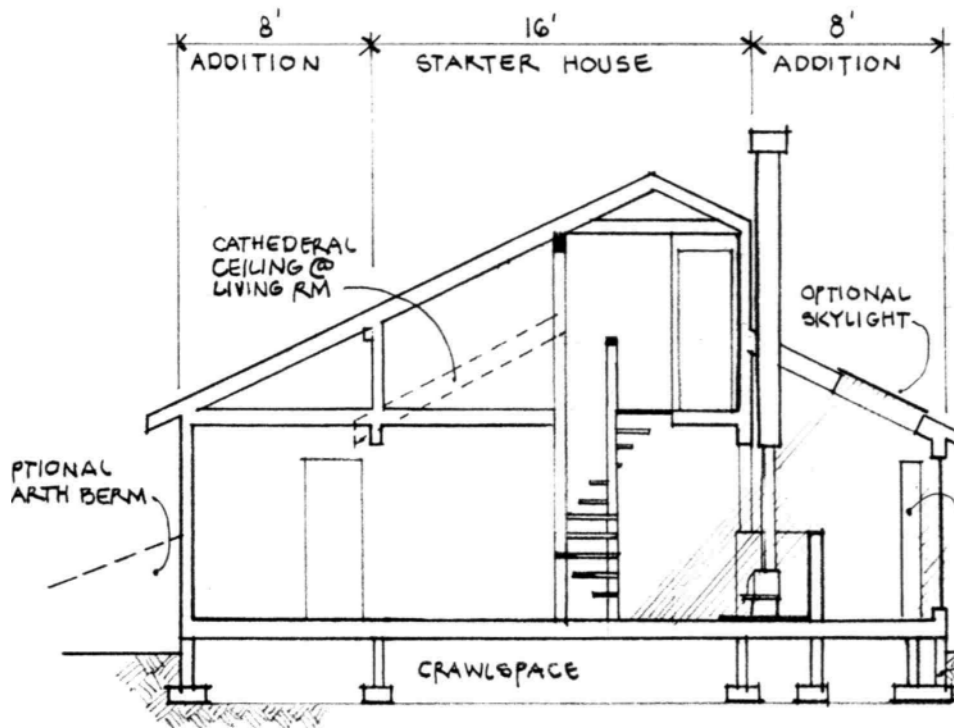
LOFT FLOOR PLAN



MAIN FLOOR PLAN

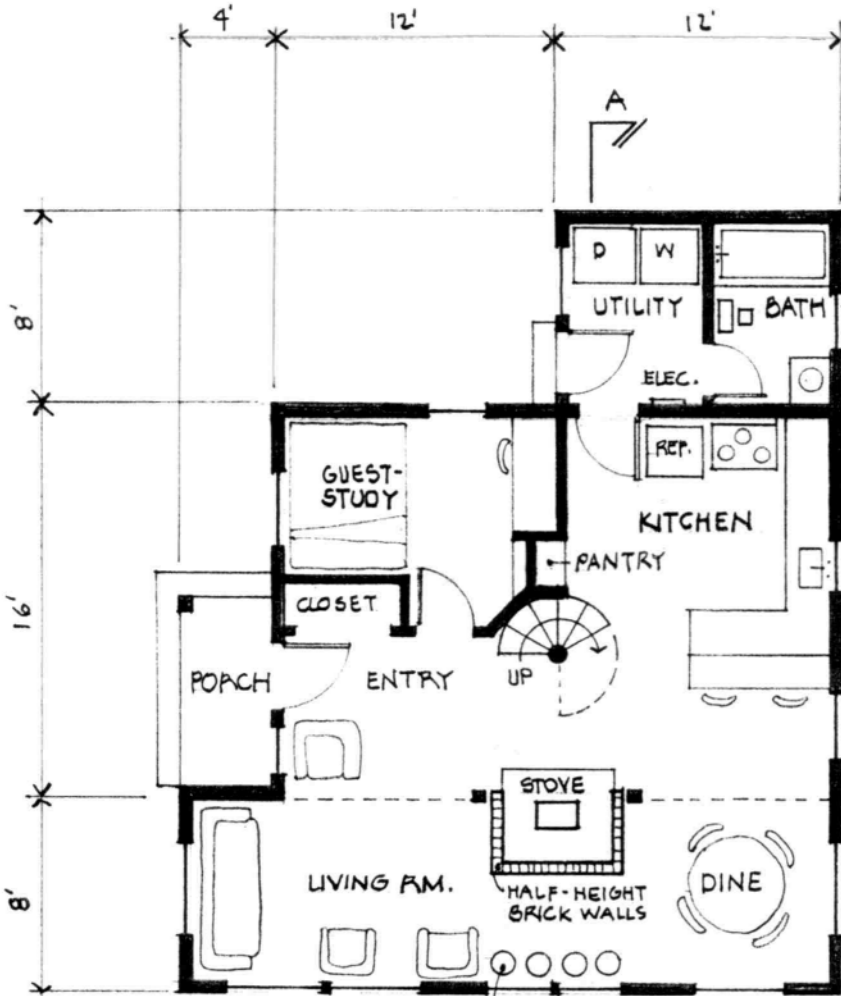


LOADS CARRIED BY BEAM, 4" INFILL WALL TO BE MOVED LATER.  
DECK DESIGNED TO BE SUBFLOOR OF EXPANSION.



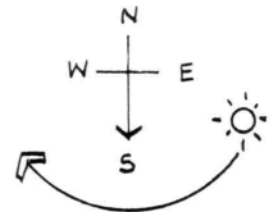
- LIVING AREA - 920 SF
- MATERIALS COST  
ADDITIONAL ~ \$6,500  
TOTAL ~ \$11,500
- NOW FULLY MODERN WITH CONNECTIONS TO POWER GRID, WELL OR COMMUNITY WATER, SEPTIC OR SEWER.
- BACKUP SYSTEMS ARE ALWAYS IN PLACE FOR OPTIONAL OR EMERGENCY USE.

SECTION AA



RUMBING ADDITION WITH HOOK UP TO POWER, WATER AND SEPTIC SYSTEMS.

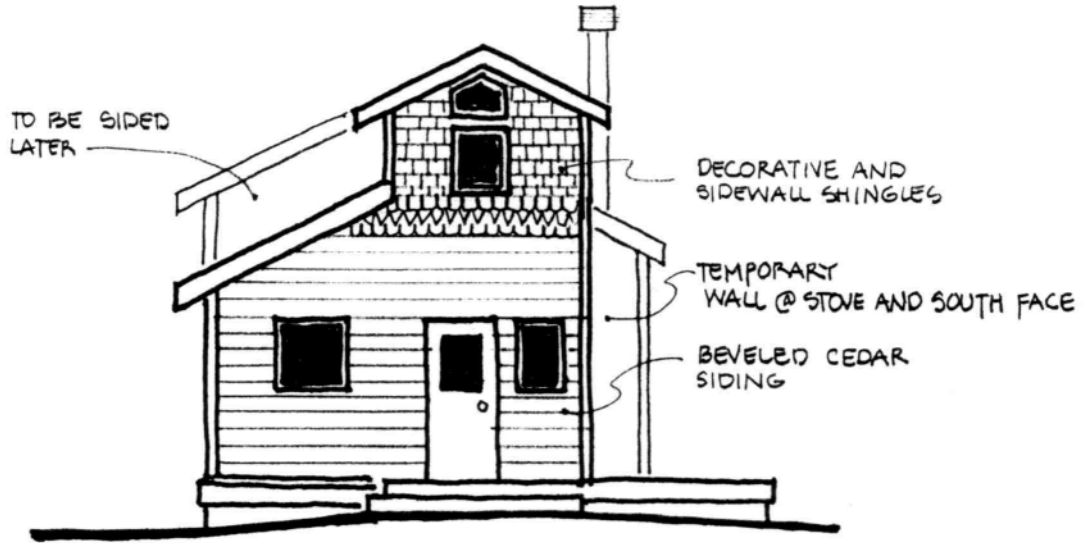
MAIN FLOOR PLAN  
LOFT PLAN REMAINS UNCHANGED.



WALLS REMOVED AND DECK ENCLOSED.

WATER STORAGE BEHIND SOLAR GLASS - WITH INTERIOR INSULATING SHADES

# WEST ELEVATIONS



ECO-COTTAGE/BASIC



ECO-COTTAGE/EXPANDED