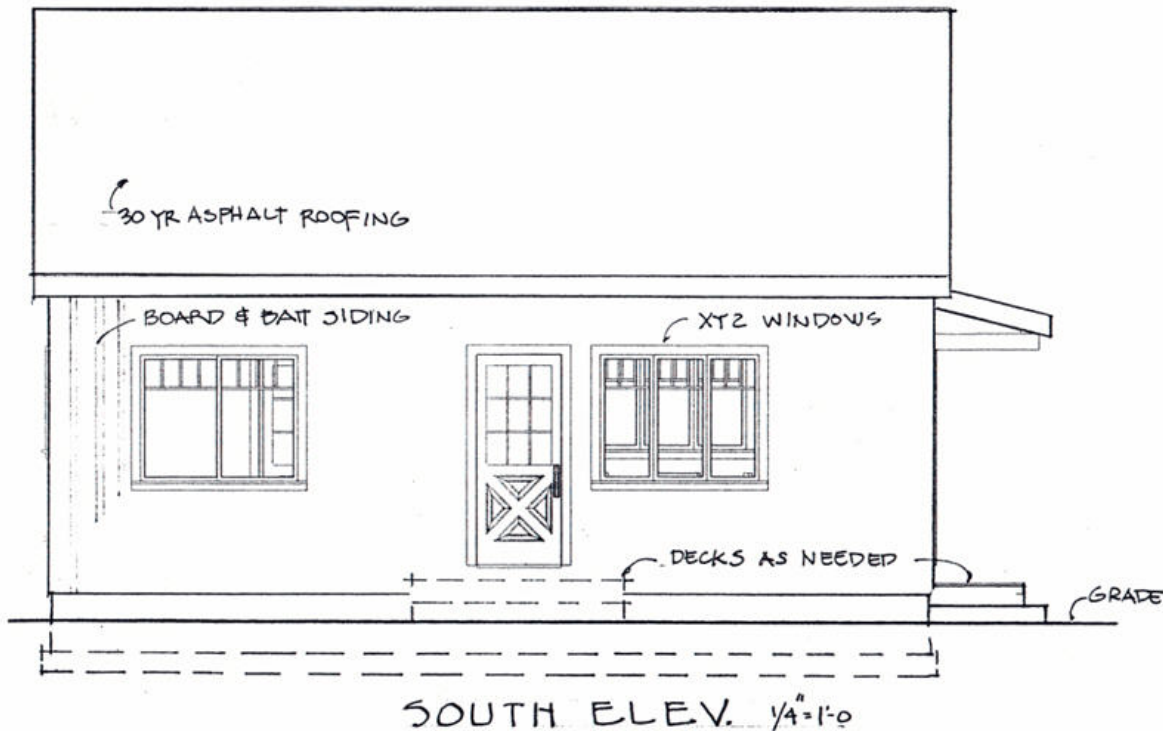
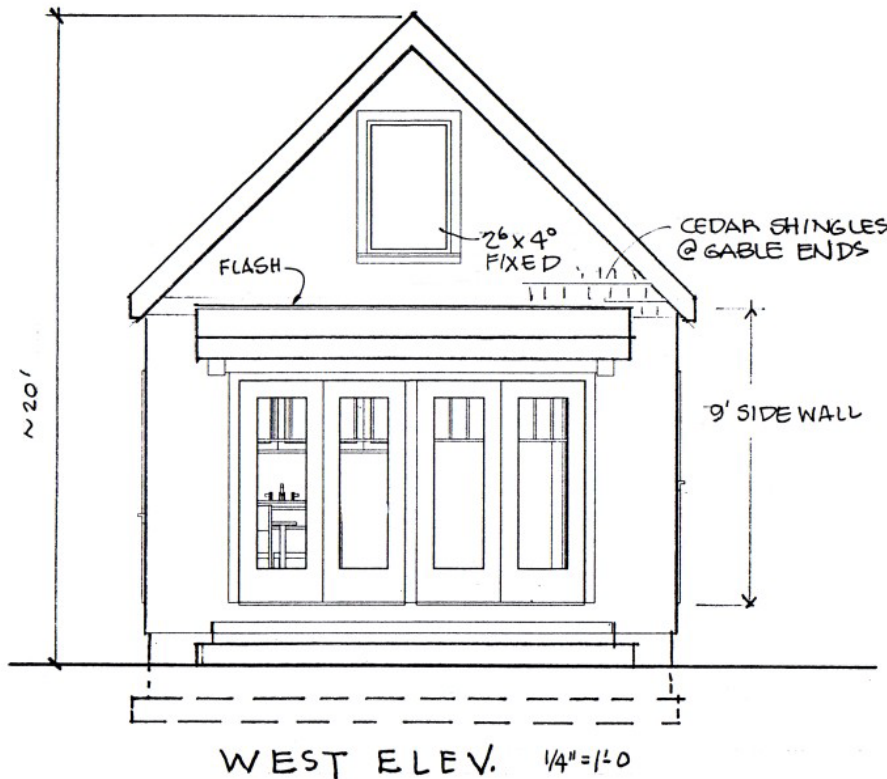


# USING BETTER HOMES AND GARDENS TO DO ELEVATIONS

Dressing up the printouts for a simple home design program.

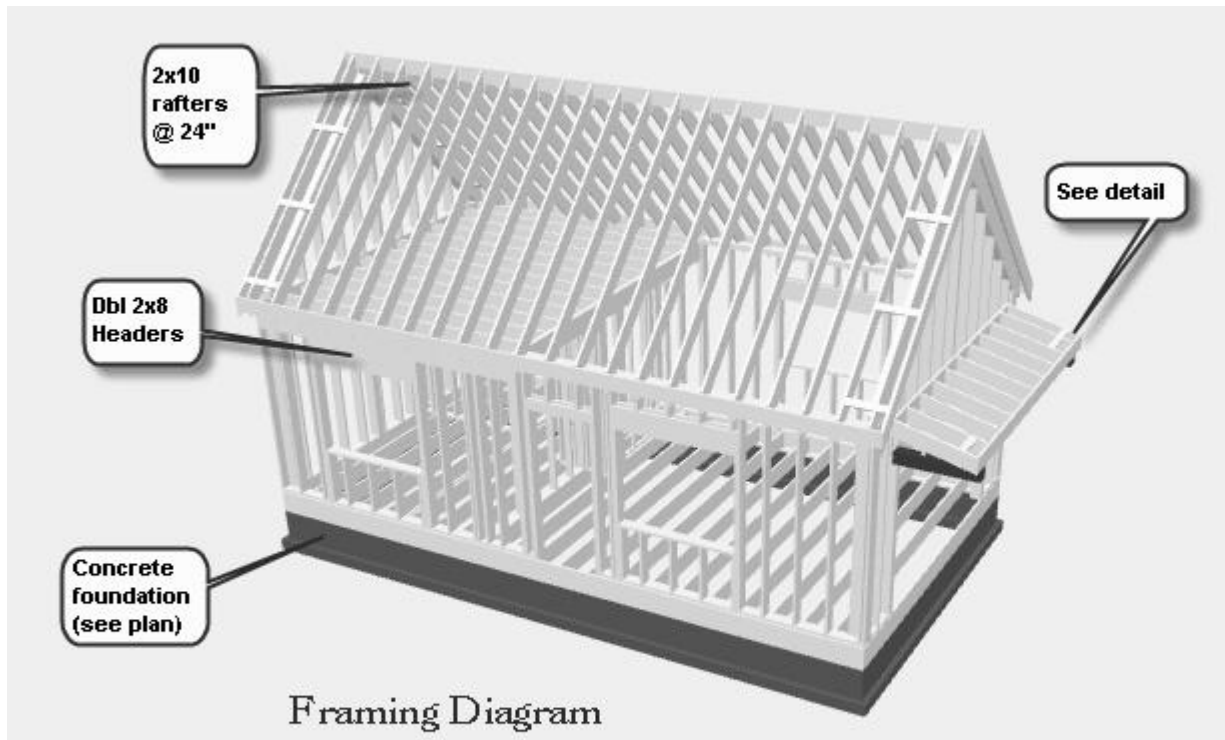


This image started as a printout from the [16x28 cottage template plan](#) from [PlanHelp.com](#) which was opened in Better Homes and Gardens v.6. It was printed (color turned off) at 1/4" scale on an inkjet printer and then touched up in pencil with notes and dimensions. Note that I have added the grade line and foundation (dotted). This drawing could be taped down to an 11x17 sheet for inclusion in a working drawing set.



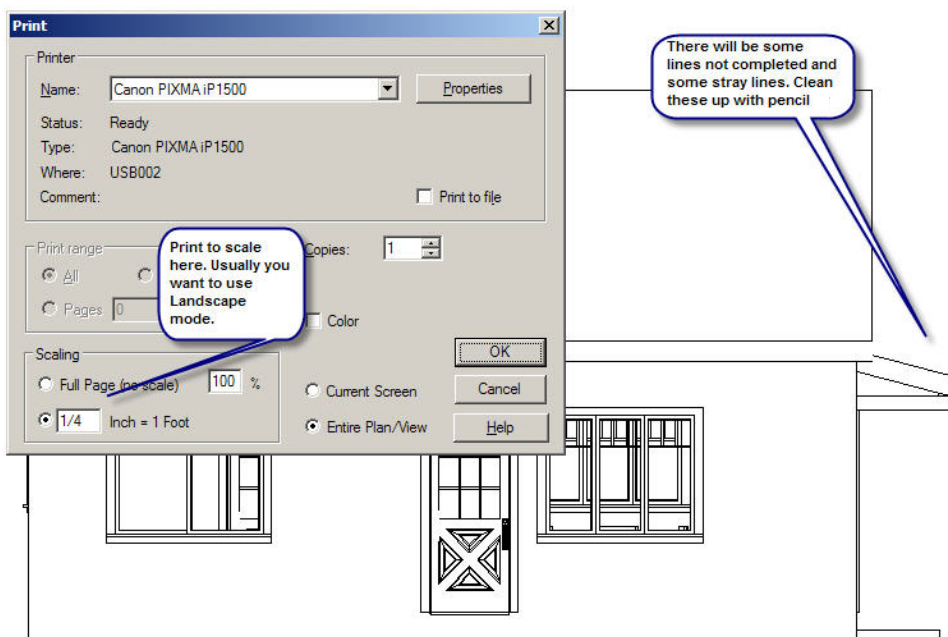
Here is the same thing done with the 16' elevation. In this case the wall points West. The upper window was added to the elevation. A nice touch for the BH&G program.

Note that these drawings are not to scale in this demo. They would be when they are done from your printouts.



Here is something BH&G is pretty good at - doing these nifty framing diagrams. This is not needed for a permit set of drawings and it is not an exactly correct diagram at any rate. But it is fun and informative!

Here I have grabbed a capture of the BH&G screen and added notes with the SnagIt screen capture



Here you see the information box on printing the elevations to scale from within the BH&G program.

3D Home Architect v.3 is very similar and adds the helpful feature of being able to cut a cross section through the building from top to bottom. BH&G does not do scale cross sections.

I hope this will encourage you to experiment combining simple CAD and pencil drawings.